

SOME OF THE VIOLATIONS YOU CAN OBSERVE AND MAKE YOUR CITY FIRE SAFE

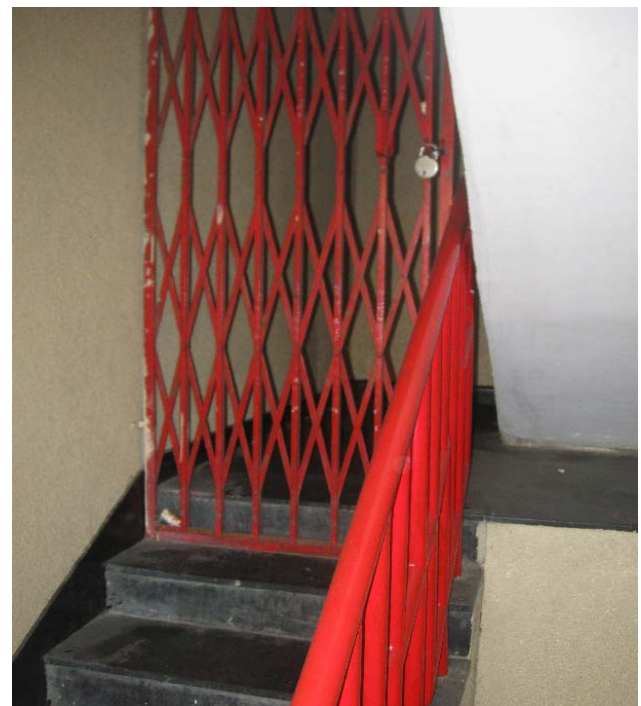
DO NOT WAIT FOR SOMEONE ELSE TO TELL!!

BE THE FIRST ONE AS YOU MIGHT SAVE SOME LIFE!!

FEW EXAMPLES OF IT TO MAKE YOU FAMILIAR WITH WHAT IS WRONG AND WHAT IS RIGHT

1. Violation type 1 - Fire Exit Blocked or your escape path is dumped with material

What is right – keep them always open and clutter free so that you can run safely when required.



2. Violation type 2 - Sprinkler are blocked/covered or Smoke Alarms blocked/covered.

What is right – Smoke detector should not be covered or blocked by stacking of material and sprinklers which is first responder on site to throw water should not be closed with plastic cover and always be clear of any storage and visible. Check if light is blinking on detector



3. Violation type 3 - Electrical room filled with combustible materials

What is right – Electrical rooms should always be combustible material free. Electrical source and combustible material should never be together.



4. Violation type 4 - Fire Extinguisher is blocked/expired/with no pressure.

What is right – Fire extinguisher should always be accessible. If it is locked then you must have access to keys 24x7. Squeeze grip type extinguisher should always have pressure in it (check the needle is above green mark). Extinguisher should not be expired.



5. Violation type 5 - Fire Hydrant with no hose along with nozzle in hydrant box.

What is right – Fire hydrant shall always be approachable by fireman when they come for fire fighting. Fire hydrant box near fire hydrant should have hose with nozzle inside it to help firefighter who knows how to use it to use in case of fire.



6. Violation type 6 - Fire hydrants but there is no water.

What is right – there has to be 24x7 water in hydrant even though water is not available in sanitation. If you get to open the hydrant report immediately to property owner. Caution – if there is water then you might have to explain.



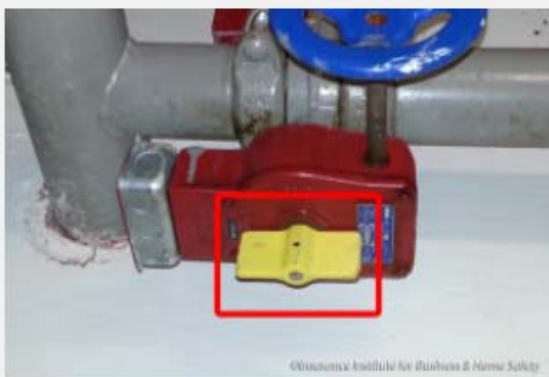
7. Violation type 7 - Space around building mis-utilized as parking space.

What is right – there should be enough space around the building for fire fighting vehicles to move around and pitch their ladder so that they can rescue people and do proper firefighting from outside of building also.



8. Violation type 8 - Valve in fire water line to sprinklers or hydrant is closed.

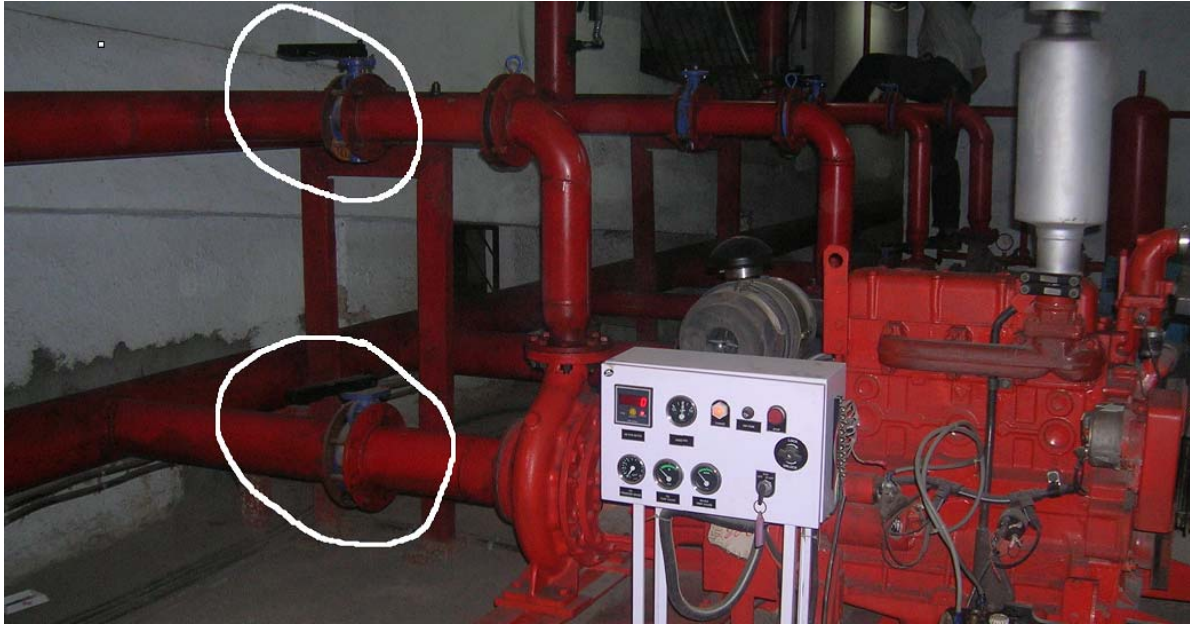
What is right – Any valve (shown in picture below) should always be open 24x7 as if this is closed there is no water in sprinkler line and hydrant line and dry sprinkler line can not help us to save ourselves. Even a firefighter without water can not help us.



The butterfly valve above is shown in the open position. When the yellow indicator flag (outlined by the red box) is in line with the pipe, it is open. When it is perpendicular to the pipe, it is closed.



A backflow preventer with two outside screw and yoke (OS&Y) valves is in the open position since the valve stem is visible (highlighted by red boxes). When an OS&Y valve is shut, the stem is not visible.



Both the valve supplying water to pump and from pump to sprinkler/hydrant is closed. We might believe that water is till above sprinkler above our head but that might not be the case.



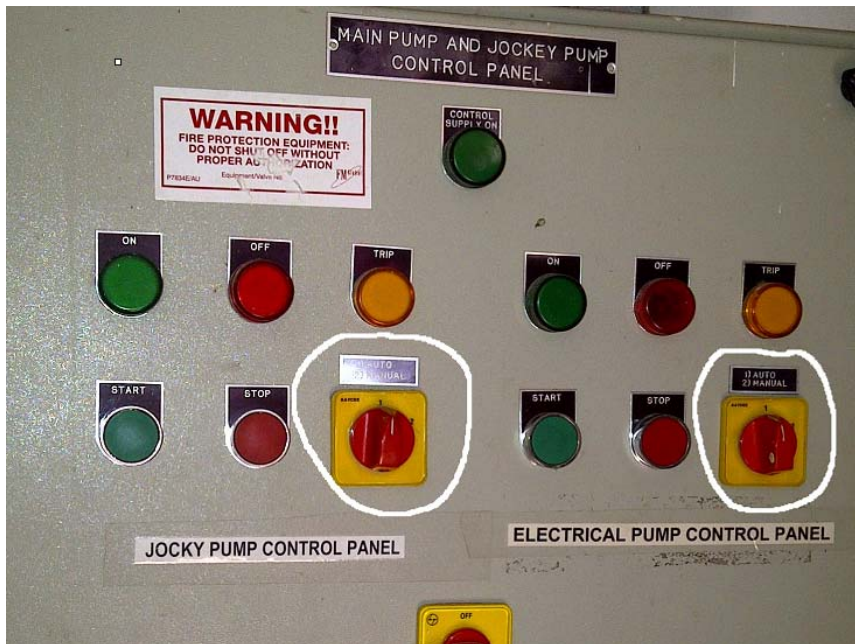
A valve on sprinkler line above our false ceiling is closed and we believe that water is available till last sprinkler. This is why sprinklers do not work. We can save ourselves by supplying water to sprinklers.

9. Violation type 9 - Fire pump is in off or manual mode.

What is right – Fire pumps should be in “Auto start” mode so that as soon as some sprinkler open or hydrant open for fire fighting the pump should kick in and give more water. If it is in manual mode do you believe any one will go back inside the building on fire to get the pump running when there is need to run for your life out of the building.



The controller switch will tell you if they are in Auto or Manual or Off mode. Here in picture above you see all three examples. Sprinkler (spr) in Auto, Jockey is off and Hydrant pump is in manual mode.



In above picture you see both pumps in Auto mode which is good situation.

10. Violation type 10 –Combustible materials in cable shafts.

What is right – The shaft should never have combustible material inside. Also the cable shaft should have cut off (as shown in pic) so that fire/smoke does not travel fast upwards. The cable shaft goes right from basement till top floor and if cable start burning due to combustibles (as shown in pic) then there will be thick smoke which is more dangerous. Statistics also show that deaths are more due to smoke.

